

AGENDA LANGUAGE

Take up for consideration and possible action an Order to Conform Election Precincts following the Redistricting of the Commissioners Court Precincts pursuant to Chapter 42, Texas Election Code, and any resulting changes that may have an impact upon the Justice of the Peace/Constable Precincts.

Tomar para consideración y posible acción una Orden para Conformar Precintos Electorales luego de la Redistribución de Distritos de los Precintos del Tribunal de Comisionados de conformidad con el Capítulo 42, Código Electoral de Texas, y cualquier cambio resultante que pueda tener un impacto en el Juzgado de Paz / Precintos del Alguacil.

**IN THE COMMISSIONERS COURT  
OF  
LAMB COUNTY, TEXAS**

**ORDER CONFORMING ELECTION PRECINCTS  
TO REVISED COMMISSIONERS COURT PRECINCTS**

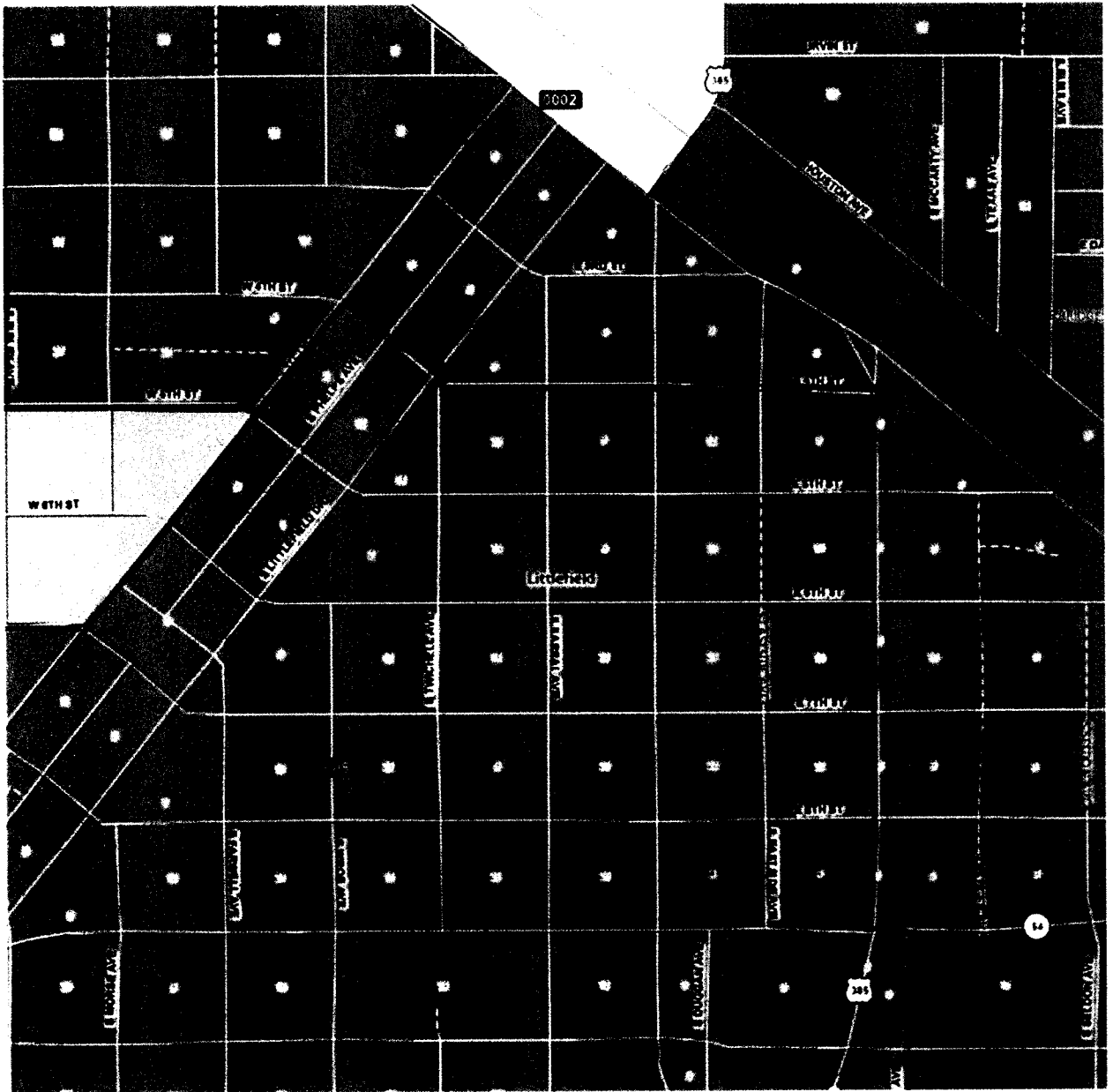
BE IT REMEMBERED, that on the \_\_\_ day of November, 2021, the Commissioners Court of Lamb County, Texas, adopted revised boundaries for its Commissioners Court precincts, pursuant to Article V, Section 18 of the Texas Constitution, §81.021 of the Texas Local Government Code, and Chapter 42 of the Texas Election Code.

Pursuant to the provisions of Chapter 42, Texas Election Code, the Commissioners Court hereby approves the realignment of County Election Precincts to conform to the newly revised and adopted boundaries of the four Commissioners Court Precincts:

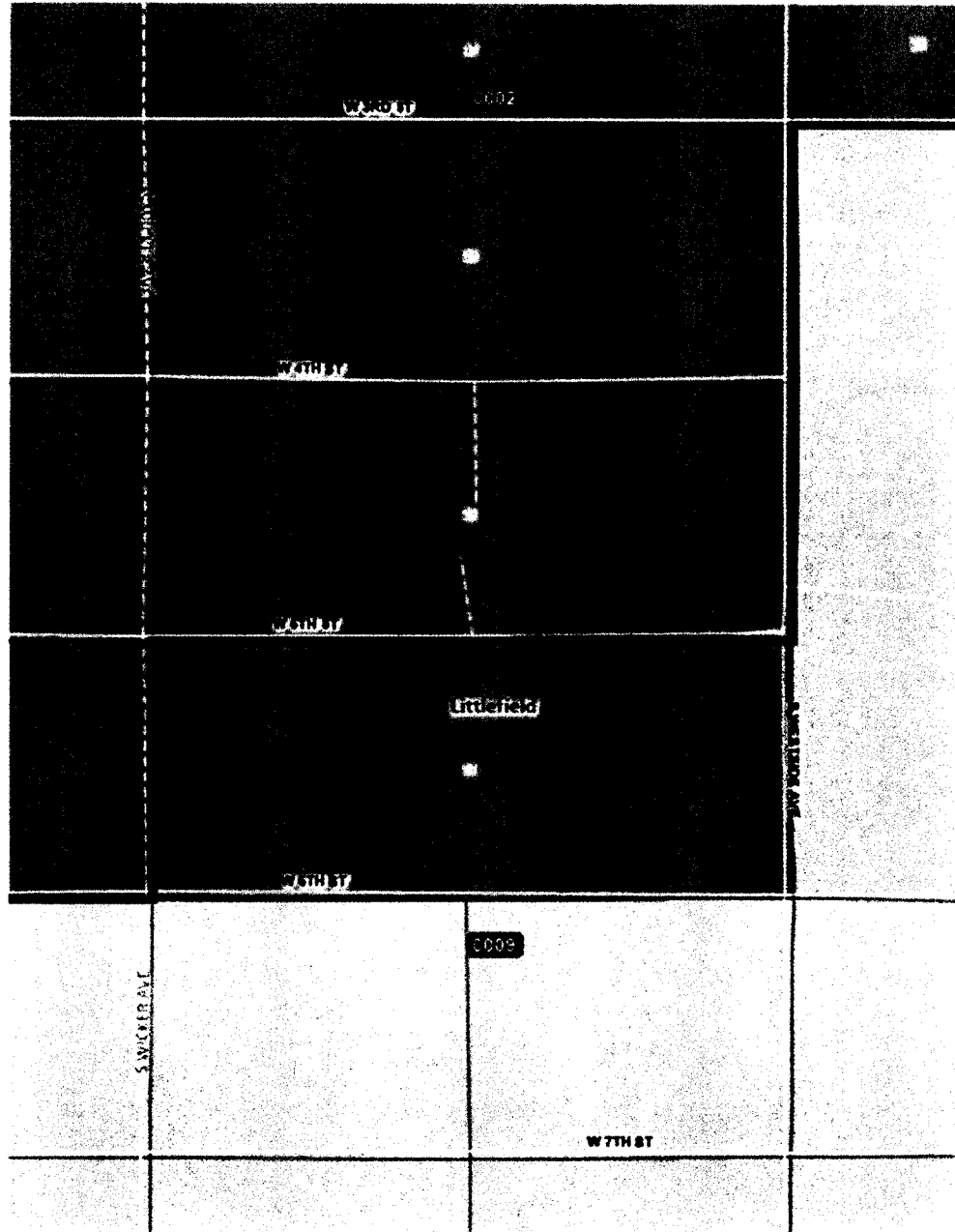
In the map depictions of election precincts below, the green lines are former boundaries, red lines are new boundaries. Former election precinct territory may appear in red type, new election precinct numbers in a black box with white letters.

1. Election Precinct 1 and 8 were modified by the redistricting of Commissioners Court Precincts, to move territory formerly in Election Precinct 8 into former Election Precinct 2, with the area bounded on the north by E. 4<sup>th</sup> St, at a point of beginning at the intersection of the centerline of E. 4<sup>th</sup> Street with the centerline of N. Hall Ave.(Hwy 385); thence west along E. 4<sup>th</sup> St., to a point of intersection with the centerline of S. Littlefield Dr.; thence southwesterly direction to a point of intersection with the centerline of S. Farwell Ave.; thence south along S. Farwell Ave. to a point of intersection with E. 9<sup>th</sup> St., (Hwy 54);

thence east along E. 9<sup>th</sup> St. (Hwy 54) to a point of intersection with the centerline of S. Hall Ave.(Hwy. 385); thence north along S. Hall Ave. to the point of beginning, as depicted on the attached map.

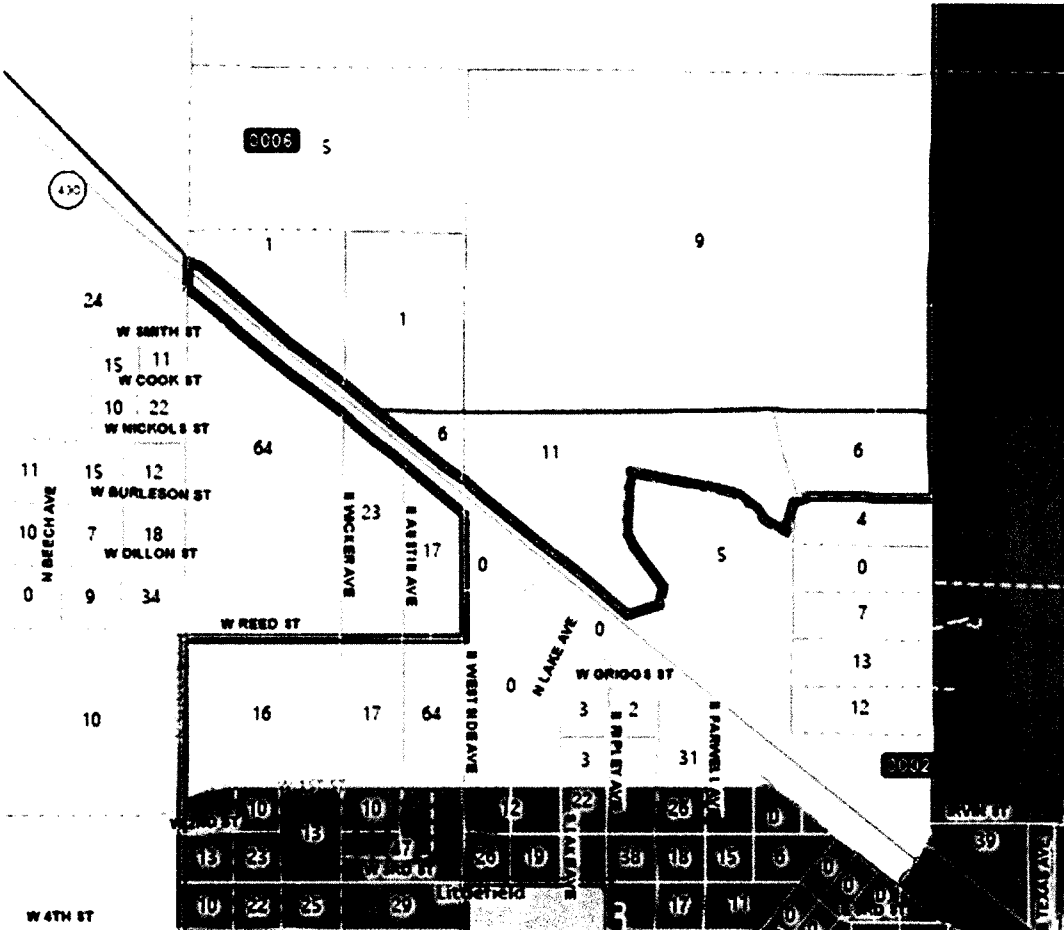


2. Election Precinct 2 and 9 were modified by the redistricting of Commissioners Court Precincts, to move territory formerly in Election Precinct 9 into Precinct 2, with the area bounded on the north, at a point of intersection of the centerline of W. 5<sup>th</sup> St. and the Centerline of S. Westside Ave.; thence west along W. 5<sup>th</sup> St. to a point of intersection with the centerline of S. Wicker Ave.; thence south to a point of intersection with the centerline of W. 6<sup>th</sup> St.; thence east along W. 6<sup>th</sup> St. to a point of intersection with the centerline of S. Westside Ave.; thence north to the point of beginning, as depicted on the attached map.

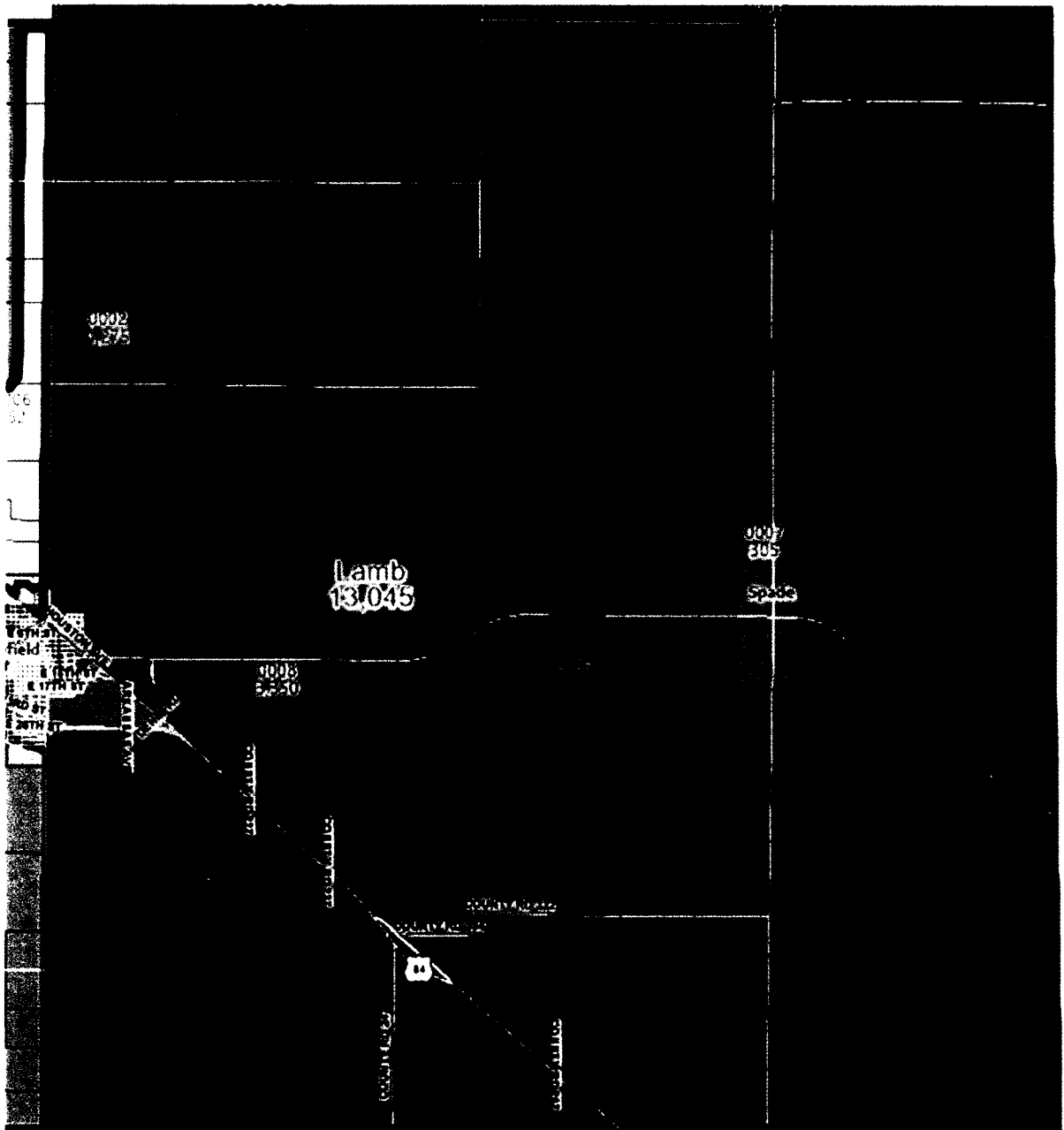


3. Election Precinct 2 and 6 were modified by the redistricting of Commissioners Court Precincts, to move territory formerly in Election Precinct 2 into Election Precinct 6, with the area bounded on the north, at a point of intersection of the centerline of N. Eastside Ave (Hwy 385) with the centerline of E. Swope St.; thence west along E. Swope St to a point of intersection with the centerline of Underwood Ave.; thence south along Underwood Ave. to a point of intersection with an un-named, irregularly shaped path that traverses west and then south to a point of intersection with the centerline of Tronson Rd.; thence northwesterly along Tronson Rd to a point of intersection with the centerline of N. Sunset Ave.; thence south along N. Sunset Ave. to a point of intersection with the centerline of W. Delano Ave.; thence southeasterly to a point of intersection with N. Westside Ave.;

thence south along N. Westside Ave. to a point of intersection with the centerline of W. Reed St.; thence west along W. Reed St., to a point of intersection with the centerline of N. Sunset Ave.; thence south along N. Sunset Ave. to a point of intersection with the centerline of W. 1<sup>st</sup> St.; then east along W. 1<sup>st</sup> St. to a point of intersection with the centerline of W. Delano Ave.; thence southeasterly to a point of intersection with the centerline of N. Eastside Ave.; thence northerly to the point of beginning, as depicted on the attached map.



- Former Election Precinct 7 is dissolved, and combined with Election Precinct 8, as depicted below:



To the extent that any of the foregoing revised election precincts contain territory inside a city with unincorporated territory outside of the affected city, the Commissioners Court, pursuant to §42.007 (1) and (2), finds that either of the two areas (within and without the incorporated city) cannot constitute a separate election precinct of suitable size or shape that contains the permissible number of voters, or cannot be combined with other territory on the same side of the city boundary to form an election precinct of a suitable size or shape that contains the permissible number of voters without causing another election precinct to fail to meet those requirements. The Commissioners Court delegates sufficient discretion to the Office of Elections Administration to make such boundary adjustment to said election precincts to facilitate the effective administration of elections, and to pose the least inconvenience to the voters of the affected election precincts.

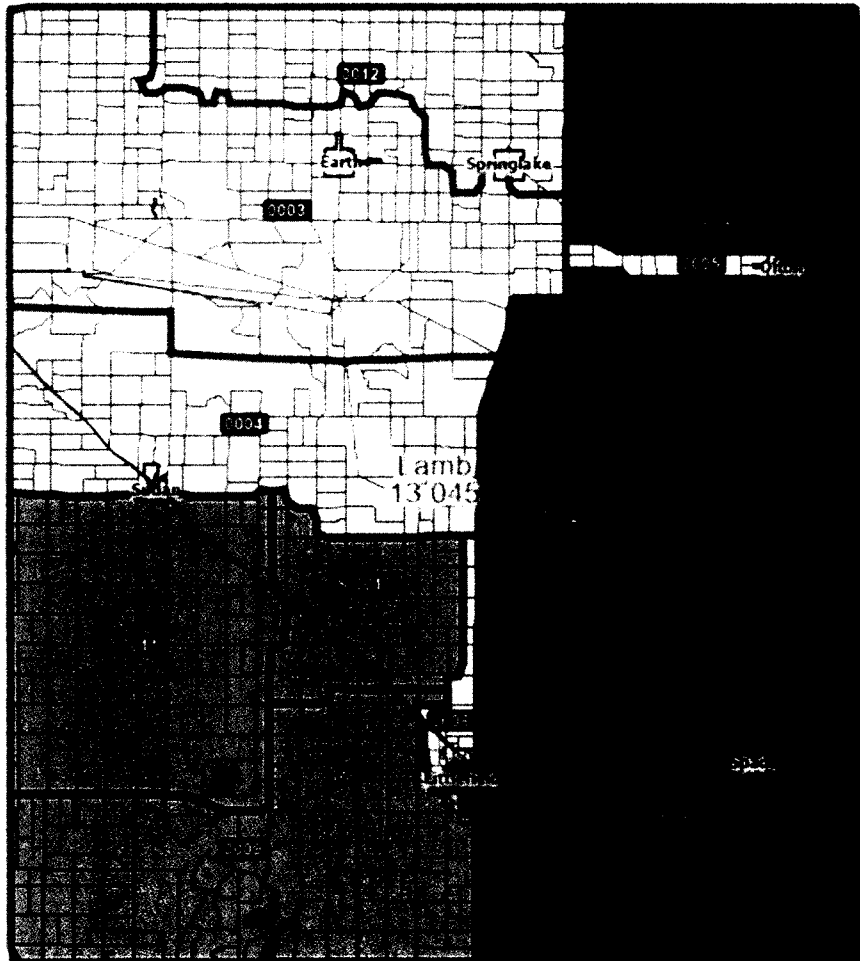
The Justice of the Peace/Constable precincts are affected by these changes as well, and run co-extensively with the political boundaries of the Commissioners Court precincts, and the election precincts that make up each such precincts.

Commissioners Court and Justice Precinct 1 is composed of Election Precincts 1 and 2.

Commissioners Court and Justice Precinct 2 is composed of Election Precincts 3, 4, 5, 6 and 12.

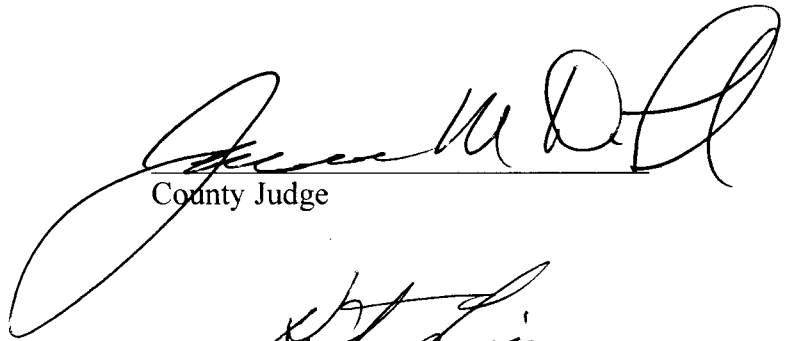
Commissioners Court and Justice Precinct 3 is composed of Election Precinct 8.

Commissioners Court and Justice Precinct 4 is composed of Election Precincts 9, 10, and 11.

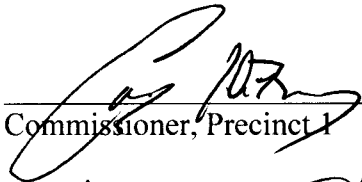


The above and foregoing changes to Election Precincts shall take effect January 1, 2021, and will remain in effect until changes by further Order of this Commissioners Court.

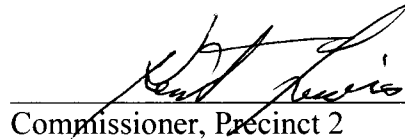
Date: 12-29-2021



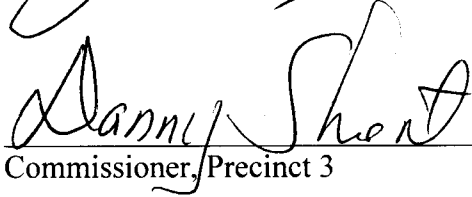
County Judge



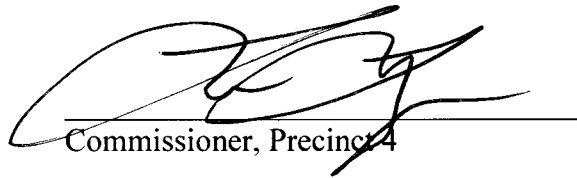
Commissioner, Precinct 1



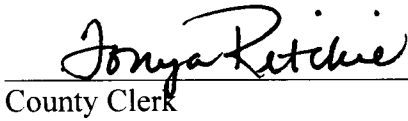
Commissioner, Precinct 2



Commissioner, Precinct 3



Commissioner, Precinct 4



County Clerk

